

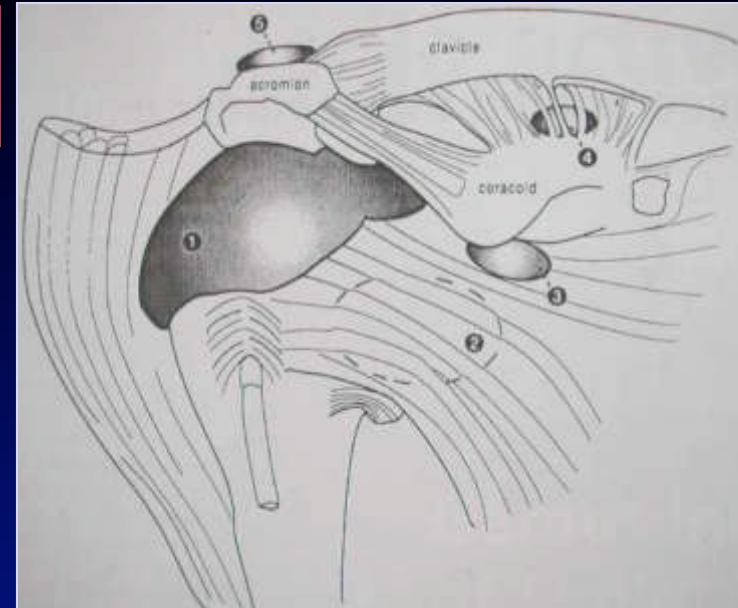
BURSOGRAPHIE ET BURSOTDM

TECHNIQUES ET INDICATIONS

Ch FAURE Clinique mutualiste E André LYON

ANATOMIE BSAD

- **Bourse sous acromiale
+ sous deltoïdienne
+/- ss coracoïdienne (11%)**
- **Ne communique pas avec**
 - art gléno-humérale
 - art acromio-claviculaire
 - récessus sous scapulaire
- **Histologie**



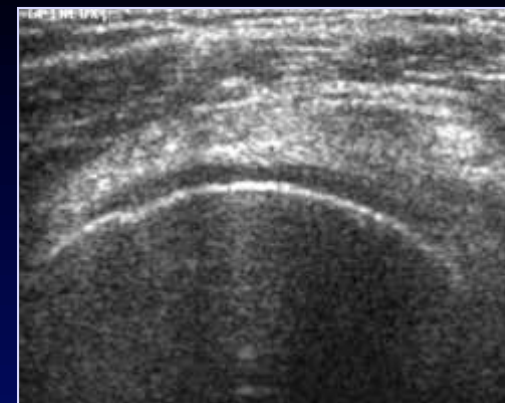
RADIOS SIMPLES

- Ligne radio-transparente
- Bursite calcifiante
- Epanchement



ECHOGRAPHIE

- Très performant
- Normal : ligne hypoéchogène < 2 mm
- Lame liquidiennne physio : 3% cas
- Epanchement

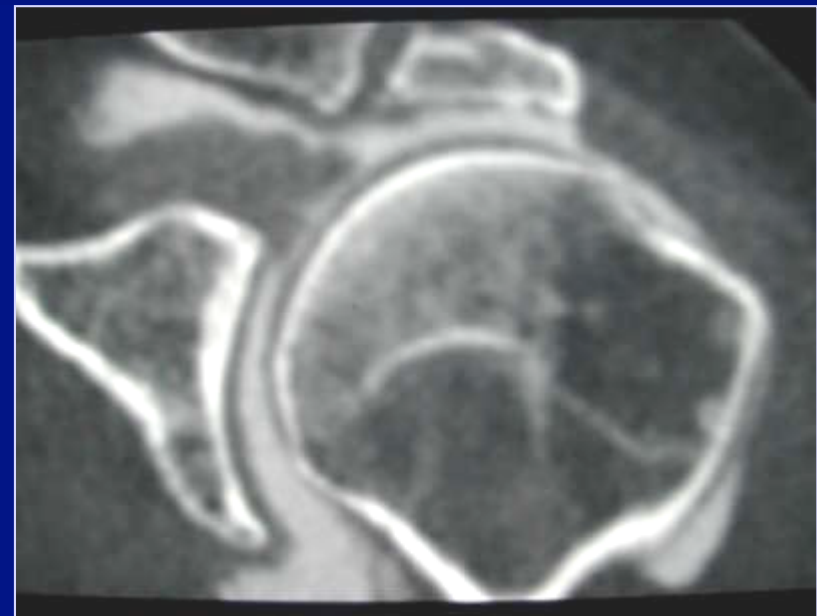


TDM

Seul a peu d'intérêt
pour pathologie de la bourse



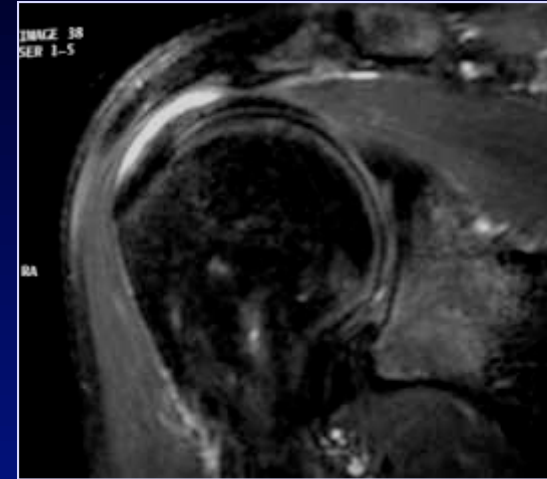
ARTHRO TDM



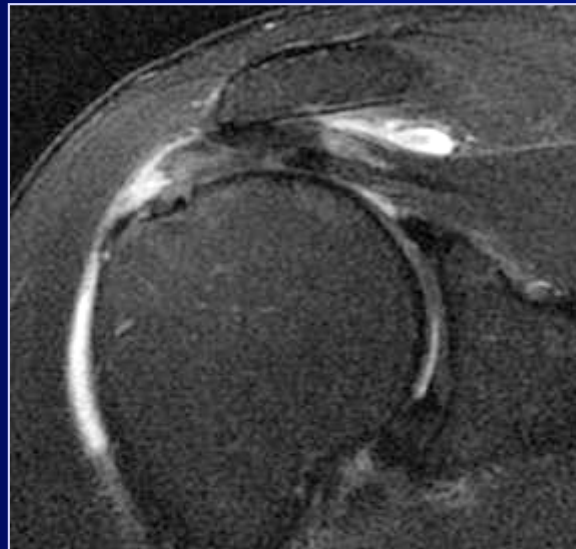
IRM

NORMAL

- Lame liquidienne physio 20%
- A distance inj corticoide (> 48h)
- Pas de prise de contraste



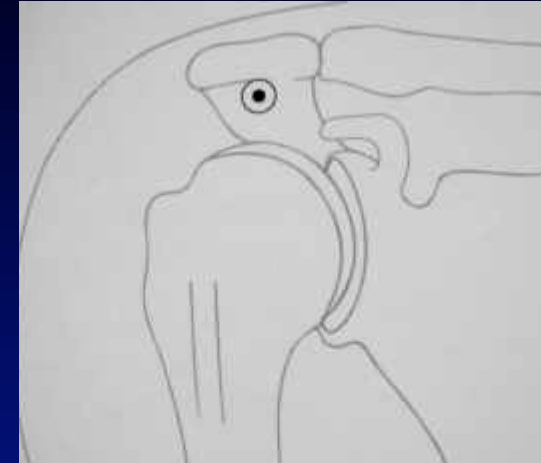
BURSISITE



BURSOGRAPHIE

TECHNIQUES

→ Ponction voie antérieure

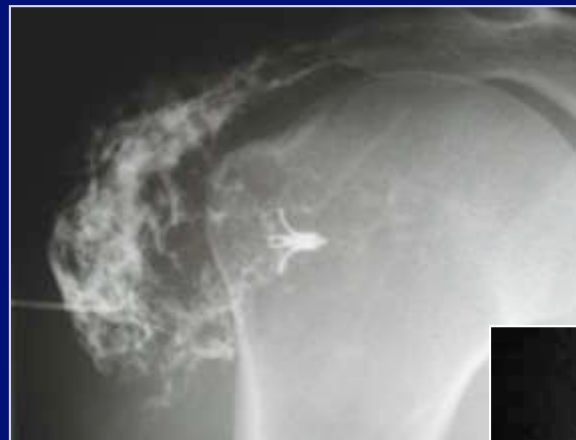


→ Ponction voie latérale



RESULTATS

- **NORMAL**
- **RETRACTION**
- **DILATATION**
- **INFLAMMATION**



- **RPFS**

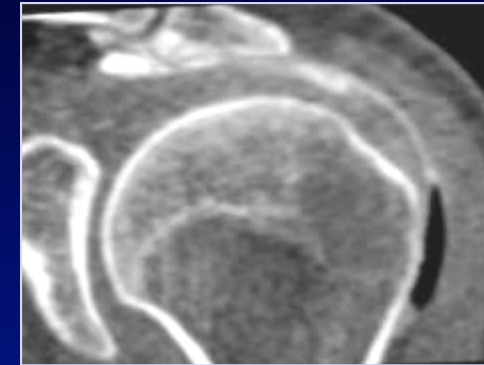


- **RUPT TRANSFIXIANTE**

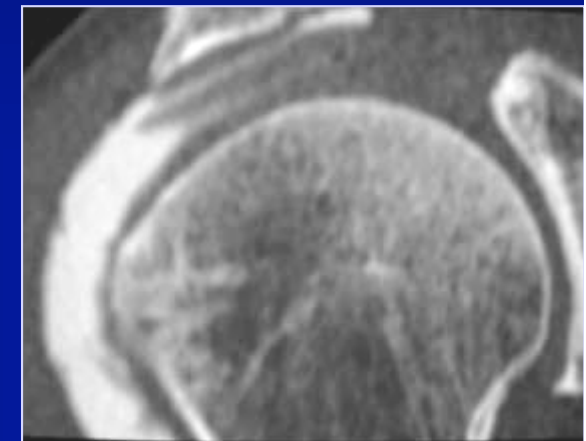
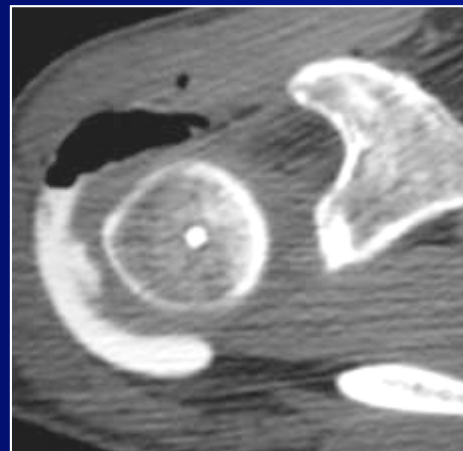


BURSOTDM

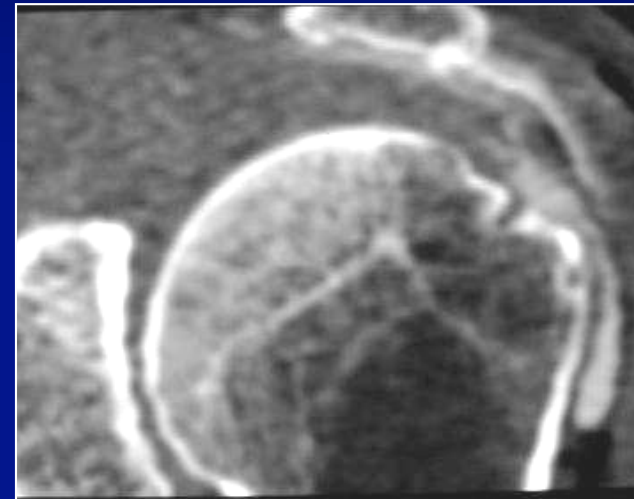
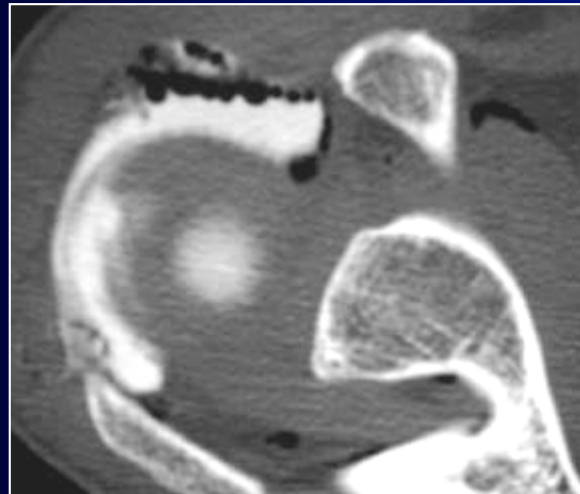
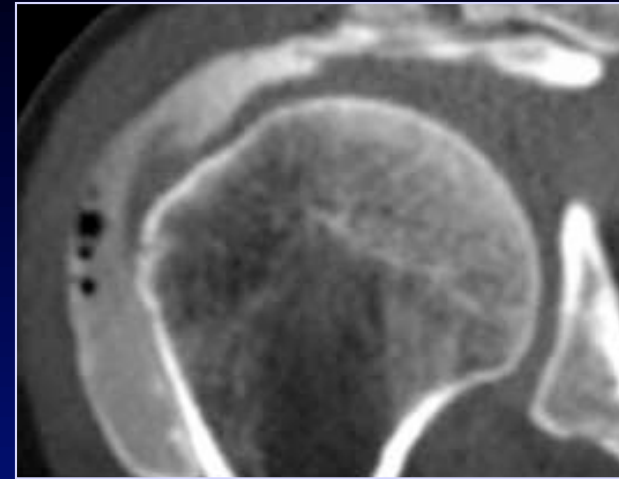
- Irrégularités face superficielle



- Rupture avec clivage



- **Ulcérations cratériformes**



INDICATION

- **THERAPEUTIQUE**

Tendinopathie calcifiante ou post calcifiante

Rupt coiffe avec d ++ et accrochage

→ Bursographie + Altim

J Bone Joint Surg Am. 1996 Nov;78(11):1685-9

We concluded that subacromial injection of corticosteroids is an effective short-term therapy for the treatment of symptomatic subacromial impingement syndrome.

The use of such injections can substantially decrease pain and increase the range of motion of the shoulder.

Br J Gen Pract. 2005 Mar;55(512):224-8

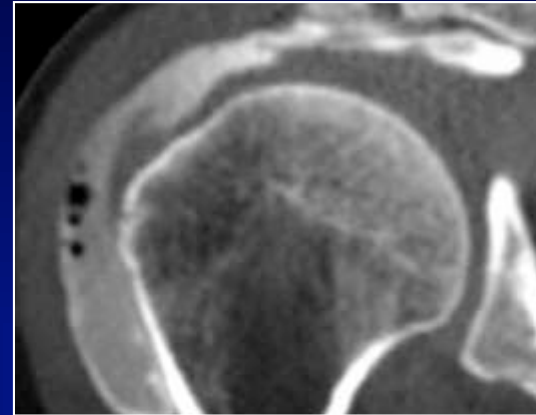
Subacromial injections of corticosteroids are effective for improvement for rotator cuff tendonitis up to a 9-month period

J Rheumatol. 2004 Feb;31(2):308-14

We suggest that sonographic-guided corticosteroid injections should be indicated, at least, in patients with poor response to previous blind injection to ensure accurate medication placement in order to improve therapeutic effectiveness.

- **DIAGNOSTIC → BURSOTDM**

Lésion partielle face superficielle coiffe



- **CI à IRM**
- **Associé à arthroTDM si arthro négative**
- **Discordance clinique / IRM**